

WEEKLY TOP TEN CHECKS

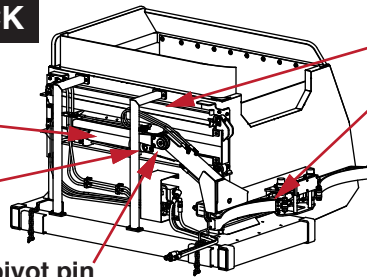
Checks 1 thru 5

1. CYLINDER PIN CHECK

1. Ensure Nylock nut is present on the rod end of the lift cylinder pin ear.

Lift Cylinder

AC02-S18 pivot pin



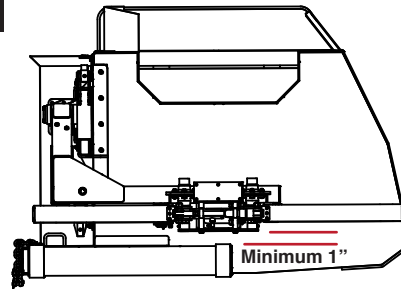
Slide Cylinder

Grip Cylinder

2. Visually inspect both ends of ALL cylinders for loose locking pins.

2. DOGBONE CLEARANCE CHECK

1. Check that the dogbone assembly is NOT sagging too close to the fork pocket. There must be a minimum of 1" between the dogbone and fork pocket.
2. If sagging also inspect AC02-S1 pivot pin (see #1 for location) and the wear strips (see item #4).

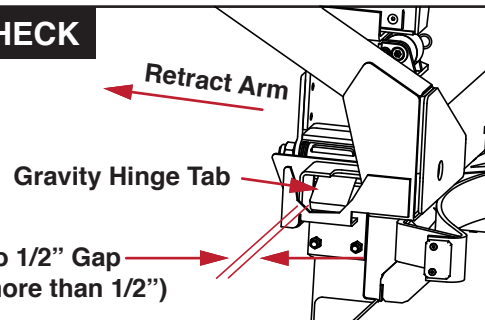


Minimum 1"

3. GRAVITY HINGE CLEARANCE CHECK

1. Retract arm and slide fully.
2. Complete Operational Lockout and Tag.
2. Ensure that the tab swings freely into the pocket with a gap as shown.
3. Note: The specified gap prevents the face of the gripper head from traveling outboard of the fork pocket.

3/8" to 1/2" Gap
(Not more than 1/2")

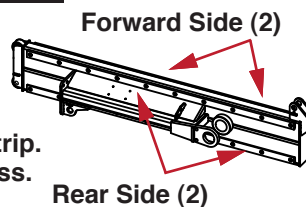


Retract Arm

Gravity Hinge Tab

4. WEAR STRIP DEPTH CHECK

1. Fully extend slide out.
2. Complete Operational Lockout.
3. Check the four (4) wear strips. If depth in any one hole is less than 1/16" replace entire wear strip.
4. Also check each bolt for tightness.
5. When replacing wear strips use Locktight on all fasteners.



Forward Side (2)

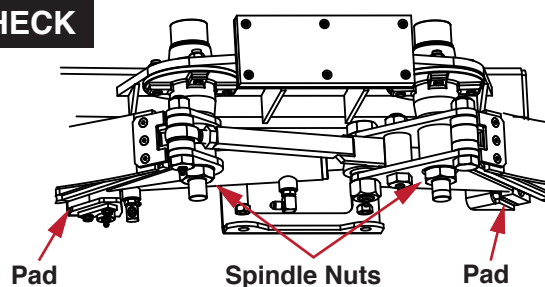
Rear Side (2)

Minimum Depth: 1/16"

Cross Section of Wear Strip and Fastener

5. SPINDLE NUT TIGHTNESS CHECK

1. Slightly open the grippers so that they are 2" from the stop pads.
2. Lift up and down on the front end of the gripper arms.
3. Arms and pivots should feel tight.
4. If loose tighten the spindle nut.
5. Use Locktight on spindle nut.



Pad

Spindle Nuts

Pad

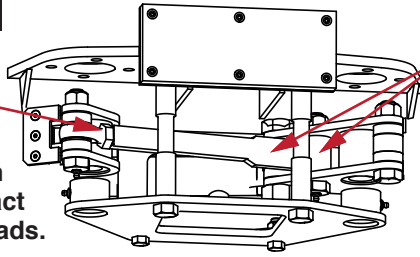
If any check does not complete successfully the Curotto-Can must be repaired before use otherwise the Warranty is void and equipment damage or operator injury could result.

WEEKLY TOP TEN CHECKS

Checks 6 thru 10

6. LINK BAR CHECK

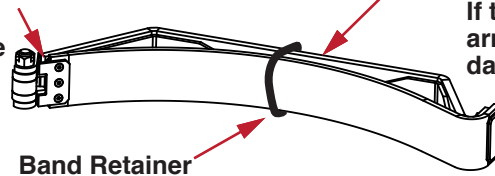
- Adjust Here
3. Maintain link bar adjustment so that both pivots make even contact on the gripper retract pads.



1. Check for interference here.
2. There should be NO contact between link bar and dogbone assembly.

7. GRIPPER BELT TENSION CHECK

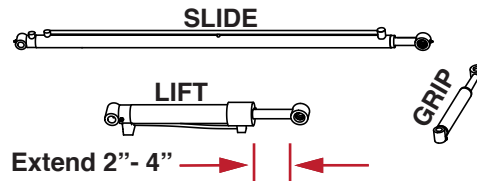
1. Check buckle - it must be tight, touching the inside of the gripper and not have any play or movement.



2. Check that the belt has enough tension so that it does not touch the arm. If the belt touches the arm - carts may be damaged.
3. Also check that the band retainer is present and not damaged.

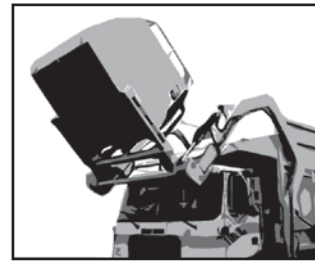
8. AUTO-RETRACT FUNCTION CHECK

1. Extend all cylinders 2" - 4".
2. Engage ARMS UP function - all cylinders should autoretract.
3. Extend all cylinders again 2" - 4".
4. Engage FORKS EXTEND function - all cylinders should autoretract.
5. If Autoretract does not work - repair before using.



9. PACKER BLADE LOCKOUT CHECK

1. Fully retract all cylinders to their home position.
2. Raise the Curotto-Can slightly above the canopy.
3. Note: DO NOT put the Curotto-Can in the hopper.
4. Engage AUTOPACK - packer blade should NOT move.
5. Do not run unit if packer blade moves - unit must be repaired before using.



10. CYLINDER CUSHION CHECK

1. Extend the slide cylinder halfway then fully retract.
2. Check for cushion on the retract function, there should be approximately 1" of cushion.
3. Close the grippers then fully extend and retract the dump cylinder.
4. Check for cushion at the top and bottom of the stroke of the dump cylinder.
5. There should be a smooth cushion of approximately 1" on both functions.
6. The piston should not slam into the barrel in the slide retract or dump cycle.
7. No cushion ? - unit must be repaired prior to use.

If any check does not complete successfully the Curotto-Can must be repaired before use otherwise the Warranty is void and equipment damage or operator injury could result.